

Micaela Portilla Research Center for Social Sciences and Humanities

Vitoria, Spain



This Project was designed and installed by our partner Madergia. The use of the building, the university's research center, influenced the inclusion of innovative solutions, in this concrete and mass timber hybrid solution. This project was developed under the rules of eco-design UNE-EN 14006, through traditional systems and innovative construction. In this case CLT wood panels were used as the outer enclosure of the facade and the structure is made of reinforced concrete. The wavy polymer concrete panels are fixed to the top of the ventilated facade. The timber warmth also has been used to design the interior spaces. The natural lighting also plays an important role in this design thanks to the interior courtyards and the curtain wall of the back facade.

School Concept by Stora Enso

Let's build a learning environment for the next generation.
Click here to learn more about our school concept.

General

Delivery year
2014

Building type
Education

Area (m²)
9000

Storeys
4



Photo credit: Madergia

Products

Products
CLT

Product quality
Non visible quality (NVI)

Product volume (m³)
150

Number of truck deliveries
3



Photo credit: Madergia



 **Team**

Partner of Stora Enso
Madergia

Architect
Estudio K

Specialist Timber Contractor
Madergia

Developer
Universidad del Pais Vasco

Main contractor
Eraikuntza Birgaikuntza Artapena



Photo credit: Madergia

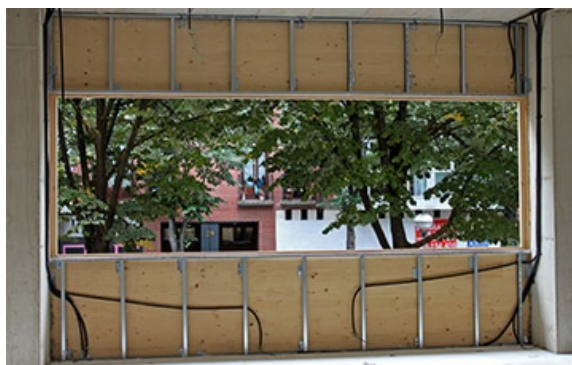


Photo credit: Madergia