

Poplar Works

London, United Kingdom



Poplar Works is a unique multi-million pound fashion and 'makery' hub combining manufacturing, training and affordable studio space, together with a community accessible café, events space and garden area. The scheme has been developed by award winning housing association, Poplar HARCA, in partnership with the Greater London Authority, London College of Fashion, University of the Arts London and workspace provider 'The Trampery'.

The project, which completed in late 2019, has transformed eighty disused garages and open space next to the A12 to create a new home for East London's fashion economy. It forms a cornerstone for the resurgent historic creative and industrial identity of Poplar and strengthens London's position as a global centre for fashion, with the community of the East End at the heart. The collaborative community hub also sets the foundations for the arrival of the London College of Fashion, which is due to relocate to the Olympic Village. The scheme provides an increase in job opportunities and training for Poplar and ensures that talent is nurtured in and attracted to East London. A total of 215 m³ CLT by Stora Enso in visual quality (VI) was used for this wooden building.

General

Delivery year
Under Construction

Building type
Commercial

Area (m²)
1801



Photo credit: Radu Malasincu

Products

Products
CLT

Product quality
Visual quality (VI)

Product volume (m³)
215

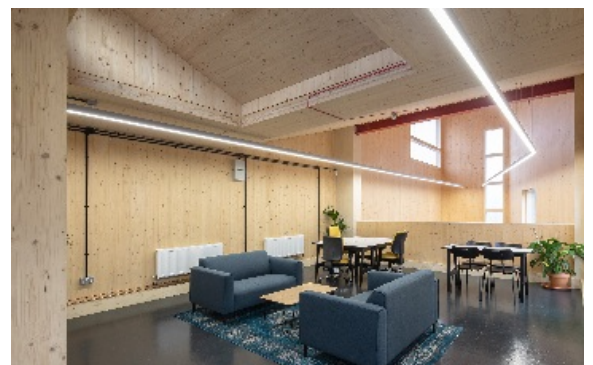


Photo credit: Radu Malasincu



 **Team**

Partner of Stora Enso
BK Structures

Architect
Adams & Sutherland

MEP Designer
Freeman Beesley

Specialist Timber Contractor
B&K Structures

Developer
Poplar Harca

Structural Engineer
Price & Myers

Main contractor
Niblock



Photo credit: Radu Malasincu

 **Others**

Construction duration (months)
22

Timber superstructure erection duration (weeks)
5