



StoraEnso

Single Family House Roth ad Our Roth ad Our, Luxembourg

Quality living conditions, a high level of comfort and optimum energy utilisation and sustainability were the customer's requirements for their new home. CLT, which is supplied ready for installation directly to the building site, significantly reduces construction and assembly times and therefore cuts down on costs. The house was built in 2011.

General

Delivery year

2011

Building type

1-2 Family Dwellings

Area (m²)

0

Storeys

2



Photo credit: Stora Enso

Products

Products and Services

Sylva™ CLT Floors and Roofs,
Sylva™ CLT Walls

Product volume (m³)

480





StoraEnso

Team

Main contractor

Immo Coplaning SARL

Photo credit: Stora Enso



Photo credit: Stora Enso



Photo credit: Stora Enso

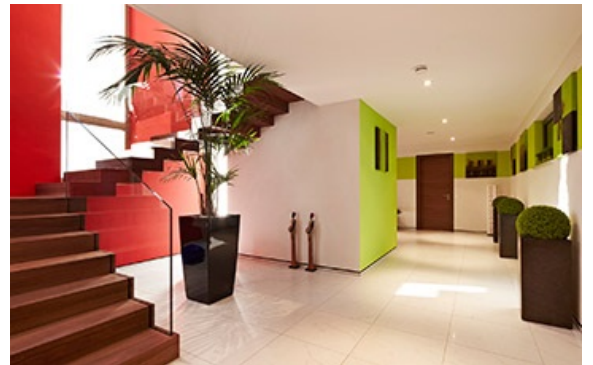


Photo credit: Stora Enso



Photo credit: Stora Enso



Photo credit: Stora Enso



Photo credit: Stora Enso