



FILAO

Clichy la Garenne, France

The Logements collectifs – FILAO in Clichy la Garenne in France, was built with CLT massive wood by Stora Enso in 2020. The modern construction material has an extremely welcome side effect: the healthy climate within wooden structures creates a particularly pleasant indoor environment and has a demonstrably positive effect on residents' wellbeing.

Residential Multi-storey Building Concept by Stora Enso

Multi-storey buildings in massive wood are high-performing, renewable structures that can help to meet the growing demand for new urban buildings and more efficient, sustainable construction.

[Click here to learn more about our residential multi-storey building concept.](#)

General

Delivery year
Under Construction

Building type
Flats

Storeys
7

Units
31



Photo credit: Bouygues Batiment IDF

Products

Products
CLT, Glulam

Product quality
Non visible quality (NVI), Visible Quality (VI)

Product volume (m³)
604

Product delivery duration (weeks)
9

Number of truck deliveries
11



Photo credit: Bouygues Batiment IDF



 **Team**

Developer
Woodeum

Structural Engineer
Sylva Conseil

Architect
Sylvie Solvet architecte

Main contractor
Bouygues Batiment IDF



Photo credit: Bouygues Batiment IDF



Photo credit: Bouygues Batiment IDF

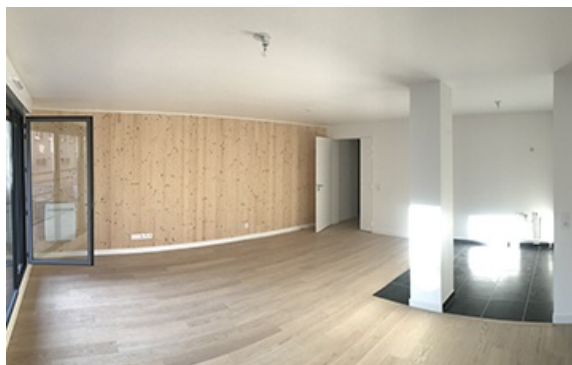


Photo credit: Bouygues Batiment IDF



Photo credit: Bouygues Batiment IDF

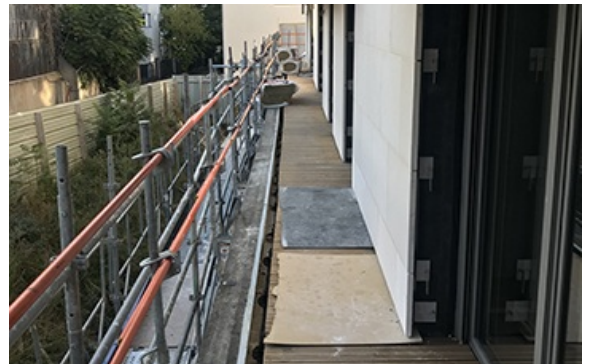


Photo credit: Bouygues Batiment IDF