



Partner of Stora Enso

Epicéa

Paris, France

Close to the Issy-les Moulineaux fortress near Paris, this 1 550 m² building with 23 flats has been finalized and fits perfectly into the environment. The structure consist of CLT by Stora Enso and glulam, and has been certified by the BBCA association as a low carbon building. The construction time was only 11 month (including 4 weeks for the CLT) and 649 m³ of CLT by Stora Enso have been used.

Residential Multi-storey Building Concept by Stora Enso

Multi-storey buildings in massive wood are high-performing, renewable structures that can help to meet the growing demand for new urban buildings and more efficient, sustainable construction.

[Click here to learn more about our residential multi-storey building concept.](#)



Certified BBCA



Photo credit: Woodeum



General

Delivery year

2017

Building type

Flats

Area (m²)

1550

Storeys

3

Units

23

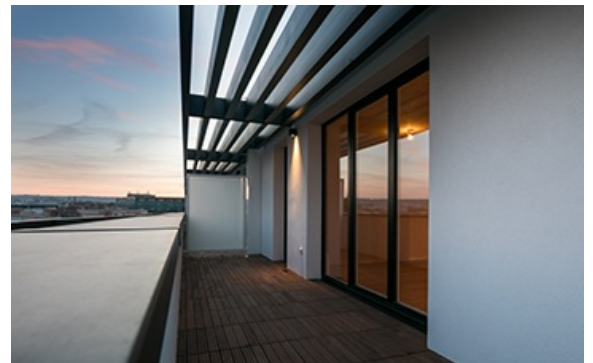


Photo credit: Woodeum



Products

Products
CLT, CLT stairs

Product volume (m³)
649

Number of truck deliveries
15

Product quality
Visible quality (VI)

Product delivery duration (weeks)
4



Photo credit: Woodeum

Team

Partner of Stora Enso
Woodeum

Architect
Wilmotte & Associés

MEP Designer
Pouget Consultants

Specialist Timber Contractor
Bouvques Bâtiment IDF

Developer
Woodeum

Structural Engineer
Sylva Conseil

Main contractor
Bouvques Bâtiment IDF



Photo credit: Woodeum

Others

Construction duration (months)
11

Timber superstructure erection duration (weeks)
4



Photo credit: By Stora Enso



Photo credit: By Stora Enso