



StoraEnso

Agricultural Centre Maishofen

Maishofen, Austria

The agricultural centre in the Salzburg Pinzgau region stands out as an impressive structure, largely due to its generously perforated, front-mounted façade with solid wooden pillars extending across both storeys.

The new agricultural centre designed by sps÷architekten seamlessly integrates multiple agricultural functions under one roof, blending traditional forms with modern functionality. It houses the Maschinenring and the district farmers' chamber of Pinzgau, and the cattle breeding cattle association under one roof.

The centre is accessed via a central two-storey foyer, featuring a wooden main staircase with open steps made of blue-grey diabase. The light-filled hall on the ground floor provides direct access to shared meeting rooms, facilitating easy zoning of different functional areas, with the Maschinenring on the ground floor and the district farmers' chamber on the upper floor.

In the extension building, the cattle breeding association occupies both floors. A side entrance at the interface to the outdoor area in front of the auction hall creates additional synergies, allowing farmers to quickly complete administrative tasks or access the Maschinenring for livestock auctions.

The structure is harmoniously integrated into the existing complex, creating a new courtyard that serves as a central hub. The building's façade features vertical wooden pillars that provide a contemporary look while concealing smaller-scale elements like windows and doors.

The main structure, built above a concrete basement, uses a clay-plastered cross-laminated timber (CLT) construction. Prefabricated timber element walls and ceilings form the core, with light-glazed wooden surfaces inside, some perforated or clad with felted wool for sound absorption.

The project utilised the Sylva kit of parts by Stora Enso including 169 m³ of [Sylva™ CLT Floors and Roofs](#), and [Sylva™ CLT Walls](#) in visual quality. This choice enhances the building's aesthetic appeal and demonstrates the practical benefits of mass timber construction, such as reduced material usage and faster, more efficient installation.

About the architect

Simon Speigner, founder and director of sps÷architekten from Thalgau in Salzburg which is renowned for its expertise in sustainable and energy-efficient building designs, including [CIS - Centre for Inclusion and Special Education](#), [Agricultural Centre Maishofen](#), [Eco Pavilion](#), and [the Nordic World Ski Championships](#). He completed his architecture studies at the Technical University of Graz. Speigner has received numerous accolades for his innovative work, including the Austrian State Prize for Architecture and Sustainability in 2010 for the Passivwohnanlage Samer Mösl project. He is also actively involved in academia, teaching at the Salzburg University of Applied Sciences in the "Baugestaltung-Holz" program since 2005. Under his leadership, sps÷architekten has grown to be a significant player in the architectural landscape of Salzburg, known for its commitment to ecological and sustainable building practices. ([Source SN.at](#))

Background

Plans for the agricultural centre began in 2014 when sps÷architekten submitted their designs for a joint office building to an architectural competition. Despite initial plans for a flat roof, strong community dissent led to the adoption of a slightly inclined roof with a superimposed PV system. Vertical wooden slats in front of the façade create sheltered spaces, while inside, the compact construction around an atrium provides access to different sectors. The building is ventilated through the atrium at night, with photovoltaic modules on the roof providing electricity, and water-efficient fittings.



StoraEnso

In an interview to [PREFA](#) about the project Speigner said, "We're very conscious of the fact that everything we bring into the cycle during ecological construction eventually has to be discarded or brought back into the cycle. In Maishofen, we plastered ecologically sustainable clay, realised a large part of the building in wood and placed an aluminium roof on top of it. At present, we're ahead of others in this respect or stand out from conventional construction. However, looking ahead, there is certainly still a lot that can be done!"

[Read more About this project](#)



Rosenheimer Holzbaupreis 2020



Constructive Alps 2017



Photo credit: ©Andrew Phelps

General

Delivery year

2016

Building type

Office

Storeys

2



Photo credit: ©Andrew Phelps

Products

Products and Services

[Sylva™ CLT Floors and Roofs](#),
[Sylva™ CLT Walls](#), Preinserted
lifting devices

Product quality

Visible quality (VI)

Product volume (m³)

169

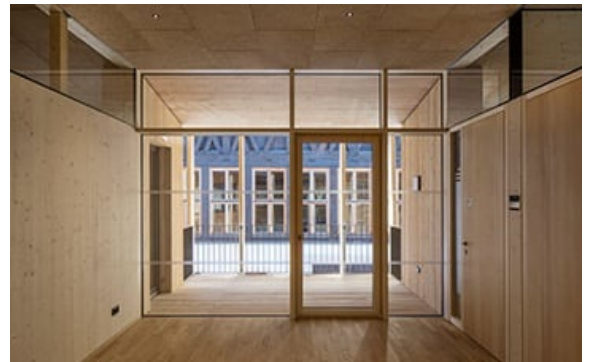


Photo credit: ©Andrew Phelps



StoraEnso

Team

Developer

Landwirtschaftskammer
Salzburg/ Salzburg Chamber
of Agriculture

Architect

sps÷architekten zt gmbh

Structural Engineer

Lackner | Egger Bauingenieure
ZT GmbH

Main contractor

Steger Bautauf GmbH,
Uttendorf

Specialist Timber Subcontractor

Innovaholz GmbH

Others

Total construction development cost (€)

2,600,000