



StoraEnso

Partner of Stora
Enso

Passage Marie

Saint Ouen sur Seine, France

The Logements collectifs - Passage Marie in Saint Ouen sur Seine in France, was built with CLT massive wood by Stora Enso in 2020. Altogether, the project comprises 14 842 m². The modern construction material has an extremely welcome side effect: the healthy climate within wooden structures creates a particularly pleasant indoor environment and has a demonstrably positive effect on residents' wellbeing.

Residential Multi-storey Building Concept by Stora Enso

Multi-storey buildings in massive wood are high-performing, renewable structures that can help to meet the growing demand for new urban buildings and more efficient, sustainable construction.

Click here to learn more about our [residential multi-storey building concept](#).

General

Delivery year

2019

Building type

Multi Residential

Area (m²)

3,600

Storeys

6

Units

48



Photo credit: Eiffage Construction

Products

Products and Services

[Sylva™ CLT Floors and Roofs](#),
[Sylva™ CLT Walls](#)

Product quality

Non visible quality (NVI),
Visible quality (VI)



Photo credit: Eiffage Construction



StoraEnso

Product volume (m³)

1,106

Number of deliveries

22

Team

Partner of Stora Enso

Woodeum

Architect

DGM & Associés

Structural Engineer

Sylva Conseil

Main contractor

Eiffage Construction Habitat



Photo credit: Eiffage Construction



Photo credit: Eiffage Construction

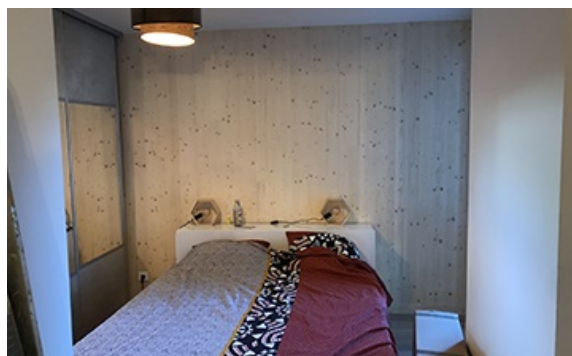


Photo credit: Eiffage Construction