



Kindergarten Flachau | Reitdorf

Reitdorf, Austria

Like many educational facilities, the Austrian ski town of Flachau and neighboring Reitdorf needed to expand to accommodate the growing population of children.

Prefabricated and quick to assemble Sylva™ by Stora Enso was the perfect solution to construct an extension. The local high school (gymnasium) and the existing kindergarten were demolished, and a two-storey wooden extension was built in their place.

Deliveries of PEFC-certified wood arrived Just-in-Time June 2022 at the start of the school summer holidays, and the kindergarten was opened its doors to children by September of the same year!

After renovation and expansion, the open-plan rooms convey a sense of togetherness and is filled with space for exercise, snacking, rest and retreat, learning, and playing for 180 children.

A two-storey connecting corridor with a veranda in front of it to the south connects the two parts of the building.

Wooden elements are mostly left visible in all areas, creating a sterile but inviting atmosphere of well-being throughout.



BIG SEE Architecture Award 2023 Winner

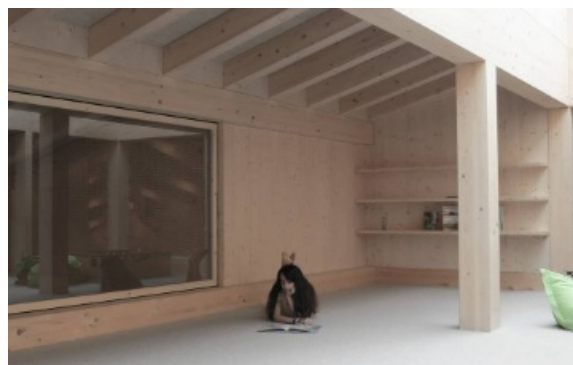


Photo credit: Stora Enso



General

Delivery year

2022

Building type

Education

Area (m²)

2117

Storeys

2

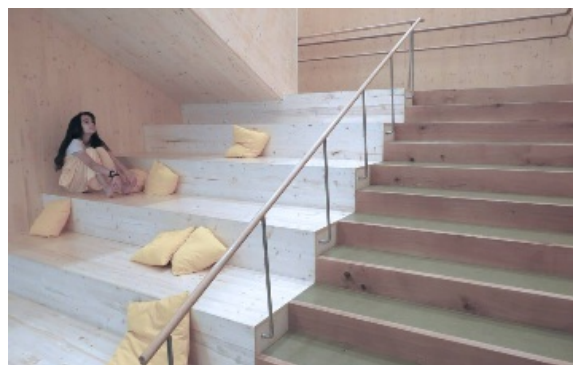


Photo credit: Stora Enso



Products

Products

Sylva™ CLT Floors and Roofs, Sylva™ CLT Walls

Product quality

BVI, NVI and VI PEFC Controlled Source wood

Product volume (m³)

280

Number of deliveries

5

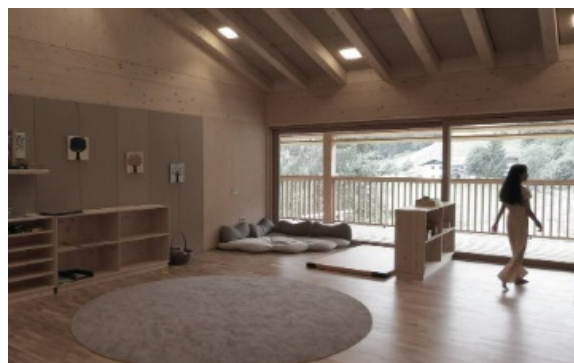


Photo credit: Stora Enso

Team

Developer

Gemeinde Flachau

Architect

LP architektur ZT GmbH

Main contractor

DMH

Specialist Timber

Subcontractor

INNOVAHOLZ GmbH

Timber Engineer

DI Graml Ziviltechnik



Photo credit: Stora Enso

Others

Construction duration (months)

7



Photo credit: Stora Enso



Photo credit: Stora Enso