

Swedish Pavilion in Dubai EXPO 2021

Dubai, United Arab Emirates

The Swedish pavilion will showcase the best in co-created innovation, sustainability and technology that the country has to offer. The framing will be another of Sweden's strong branches: the forest. The Swedish forest industries are a joint partner of the Swedish pavilion to highlight the importance of the forest industry for Sweden and inspire if responsible forestry and the circular bioeconomy roll in a global sustainable development. The completion of the pavilion was in 2020, altogether the office comprises 2 700 m². A total of 3 000 m³ CLT by Stora Enso in visible quality (VI) was used for this construction project.

General

Delivery year
2020

Building type
Others

Area (m²)
2700



Photo credit: Alessandro Ripellino Arkitekter/Studio Adrien Gardère/Luigi Pardo Architetti

Products

Products
CLT, Glulam

Product quality
Visible quality (VI)

Product volume (m³)
3 000



Photo credit: Alessandro Ripellino Arkitekter/Studio Adrien Gardère/Luigi Pardo Architetti



 **Team**

Developer

The Committee for Sweden's participation in Expo 2020

Structural Engineer

Bjerkling

Specialist Timber Contractor

Effective Solutions Litauen

Architect

Alessandro Ripellino Arkitekter, Studio Adrien Gardère och Luigi Pardo Architetti

Main contractor

ELP LLC Dubai



Photo credit: Alessandro Ripellino Arkitekter/Studio Adrien Gardère/Luigi Pardo Architetti



Photo credit: Alessandro Ripellino Arkitekter/Studio Adrien Gardère/Luigi Pardo Architetti

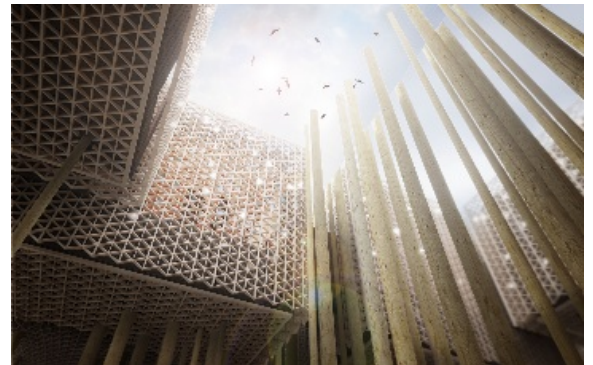


Photo credit: Alessandro Ripellino Arkitekter/Studio Adrien Gardère/Luigi Pardo Architetti