



# Campus Aquarel

## Issy les Moulineaux, France

When the Campus Aquarel in Issy les Moulineaux, France was completed, the decision was made to expand this complex to fulfill the company's requirements. For this purpose, the building was leaned against the garden in a U shape, whereby the agency decided to use wood for the extension. The wooden extension of this project is characterized by the usage of post & beams in the structure and CLT massive wood elements for the floors. The material makes it possible to realize the project in 12 weeks, an extension of 7 floors and 3 122 m<sup>2</sup> without modifying the existing structures. The completion was in 2019, for a total office surface of 33 608 m<sup>2</sup>. CLT by Stora Enso is perfect to create extension without creating a lot of disturbance in populated area.

### Office Building Concept by Stora Enso

The office buildings of the future are made of wood.  
Click here to learn more about our [office building concept](#).

---

## General

<b>Delivery year</b>	<b>Building type</b>
2019	Office
<b>Area (m<sup>2</sup>)</b>	<b>Storeys</b>
3,100	7



Photo credit: [By Loci Anima](#)

---

## Products

<b>Products and Services</b>	<b>Product quality</b>
<a href="#">Sylva™ CLT Floors and Roofs</a> , <a href="#">Sylva™ CLT Walls</a>	Non visible quality (NVI)
<b>Product volume (m<sup>3</sup>)</b>	<b>Number of deliveries</b>
612	13



Photo credit: [By Loci Anima](#)



StoraEnso

---

## Team

### Developer

SEFRI-CIME

### Structural Engineer

Terrell

### Main contractor

Spie Batignolles

### Architect

Loci Anima

### MEP Designer

Egis bâtiments

### Specialist Timber Subcontractor

Mathis



Photo credit: By Stora Enso

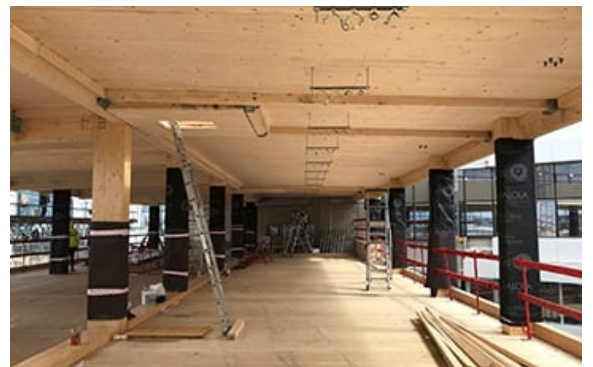


Photo credit: By Stora Enso



Photo credit: By Stora Enso