



Wood City Office

Helsinki, Finland

The new office building is based on Stora Enso's building components such as posts, beams and ribbed panels for floors and roofs. The components are made of LVL by Stora Enso from the company's Varkaus mill in Finland, as is the case regarding the two multi-storey residential buildings for Helsinki housing production in Wood City.

Office Building Concept by Stora Enso

The office buildings of the future are made of wood.

[Click here to learn more about our office building concept.](#)



General

Delivery year

2019

Building type

Office

Storeys

8

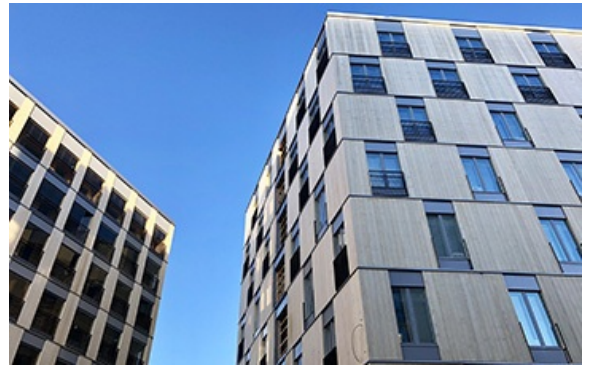


Photo credit: Stora Enso



Products

Products

LVL, LVL rib panel

Product volume (m³)

1 900

Product delivery duration (weeks)

18

Number of truck deliveries

80

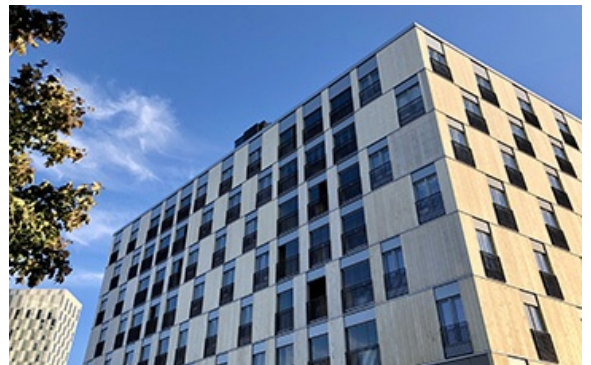


Photo credit: Stora Enso



 **Team**

Developer
Supercell

Architect
Anttinen Oiva Arkkitehdit Oy

Structural Engineer
Sweco Rakennetekniikka Oy

Main contractor
SRV Rakennus Oy

Specialist Timber Contractor
Turun Elementtiasennus Oy



Photo credit: Stora Enso

 **Others**

Timber superstructure erection duration (weeks)
18



Photo credit: Stora Enso



Photo credit: Stora Enso



Photo credit: Stora Enso