



StoraEnso

Partner of Stora
Enso

Push Pull House

Amersham, UK

EURBAN

The single family detached house is located in Amersham, Buckinghamshire. The design plays with the volume of a traditional pitched house, pulling it apart, in order to bring as much natural light into every room. The main volume is symmetrical in plan with the entrance hall and stairwell cutting through the centre. This central hallway has a flat roof and is clad with vertical timber boards stained black. A total of 120 m³ CLT by Stora Enso was used for this wooden construction project.

The entrance hall is set back from the 2 mono pitched brick volumes on either side which have a clerestory windows to the four bedrooms on the first floor. The eastern pitched roof continues down to a single storey volume which houses the large open plan kitchen, living and dining room area. A top lit secondary stair on this side of the house doubles up as a storage wall for books and ornaments and art work.

General

Delivery year

2017

Building type

1-2 Family Dwellings

Area (m²)

503



Photo credit: Jim Stephenson Photography

Products

Products and Services

Sylva™ CLT Floors and Roofs,
Sylva™ CLT Walls

Product volume (m³)

120

Product delivery duration (weeks)

3



Photo credit: Jim Stephenson Photography



Photo credit: Jim Stephenson Photography



Photo credit: Jim Stephenson Photography

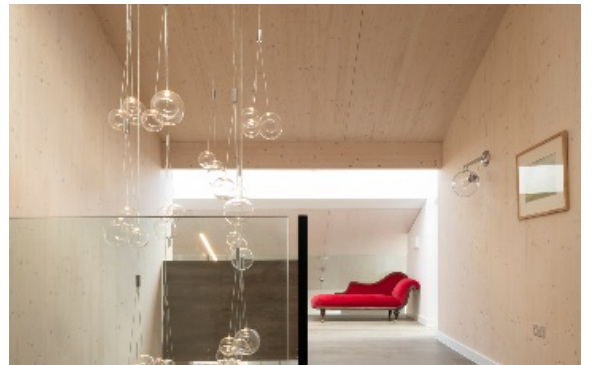


Photo credit: Jim Stephenson Photography