



StoraEnso

Partner of Stora
Enso

Single Family House Vinicny Vrch

Viničný vrch, Slovakia



The wooden single family house in Viničný vrch (Slovakia) is characterized by the usage of KVH, CLT-massive wood elements and insulated from the exterior with blown cellulose and wood fibre board. The one-storey building with a saddle roof comprises 4 rooms, social and technical facilities. Wood-aluminium window profiles were used for all window openings. The central source of heating is a gas boiler, a talc storage furnace is used as an additional source. KVH and CLT as construction material ensures a fast and easy construction and contributes to a better indoor climate. This project was completed in 2016, altogether the family dwelling comprises 130 m².

General

Delivery year

2016

Building type

1-2 Family Dwellings

Area (m²)

130

Storeys

1

Units

1



Photo credit: Milan Hutera

Products

Products and Services

Sylva™ CLT Floors and Roofs,
Structural Timber (KVH®, GST,
GLT)

Product quality

Visible quality (VI)



Photo credit: Milan Hutera



StoraEnso

Product volume (m³)

25

Team

Partner of Stora Enso

CLT Slovakia

Structural Engineer

Ing. Juraj Ďurík

**Specialist Timber
Subcontractor**

Pavel Zajac

Architect

Ing.arch Janka Ješková PhD.

Main contractor

Ing. Ľuboš Mesarč



Photo credit: Milan Hutera

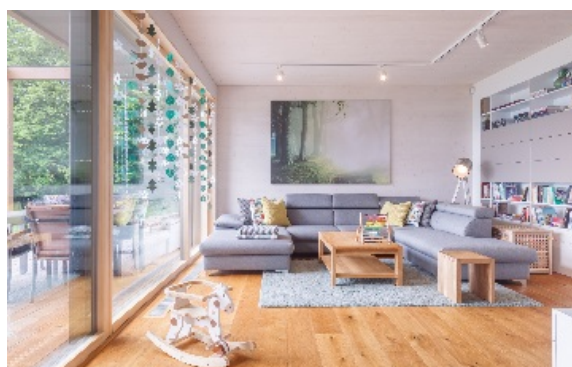


Photo credit: Milan Hutera

Others

**Total construction
development duration
(months)**

6

**Timber superstructure
erection duration (weeks)**

1

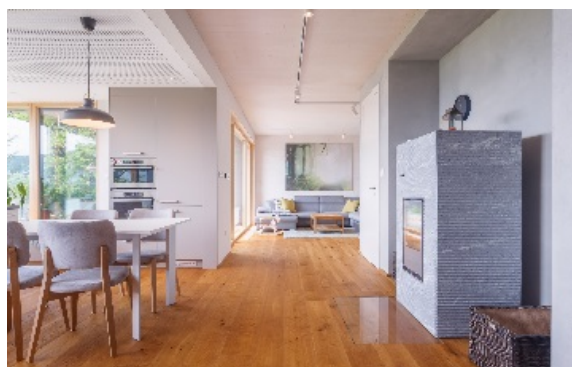


Photo credit: Milan Hutera