



StoraEnso

Geologen Trummens Strand Trummen, Sweden

Partner of Stora
Enso

WOODCON

Geologen Trummens Strand is a remarkable residential project located in Växjö, Sweden, constructed using Cross-Laminated Timber (CLT) supplied by Stora Enso. At the time of construction, this This project was one of the largest wooden building endeavors in the Nordic countries, utilizing a substantial 6,300 cubic meters.

Geologen Trummens Strand is a remarkable residential project located in Växjö, Sweden, constructed using Cross-Laminated Timber (CLT) supplied by Stora Enso. At the time of construction, this This project was one of the largest wooden building endeavors in the Nordic countries, utilizing a substantial 6,300 cubic meters.

Project Overview The Geologen Trummens Strand project includes 144 exclusive apartments and a preschool, spread across multiple buildings with the tallest reaching eight storeys. The architectural design prominently features wood, extending seamlessly from the exterior to the interior, encompassing balconies, facades, and the apartments themselves. The buildings are arranged around a shared courtyard, fostering a sense of community and providing ample space for recreation and socializing.

Structural Details The structural system of the project is characterized by a hybrid combination of timber and concrete. The first two floors utilize reinforced concrete for the core and floors three to eight transition to CLT for the walls and core, and CLT slabs for floor spans. This technique enables structural integrity with a lower carbon footprint.

Architectural Features The architectural design by Fojab Arkitekter emphasizes a harmonious blend of functionality and aesthetics. The buildings feature expansive balconies oriented towards Lake Trummen, providing residents with stunning views and a connection to nature. The use of wood in both the exterior and interior design creates a warm and inviting atmosphere, enhancing the overall living experience.

Community and Lifestyle Geologen Trummens Strand is designed to cater to the contemporary urban lifestyle. Each apartment includes both a study and spacious living areas, fostering an ideal balance between work and family life. The shared courtyard and communal spaces encourage social interaction and community building, making it an attractive place to live.

Would you like to know more about large-scale urban developments with Sylva™?

[Wood City, Helsinki](#) | [River City, Gothenburg](#) | [Trondheim, Norway](#)

Download [free white paper on 10 Advantages with mass timber](#)



StoraEnso



Växjö Wood Building Award 2019

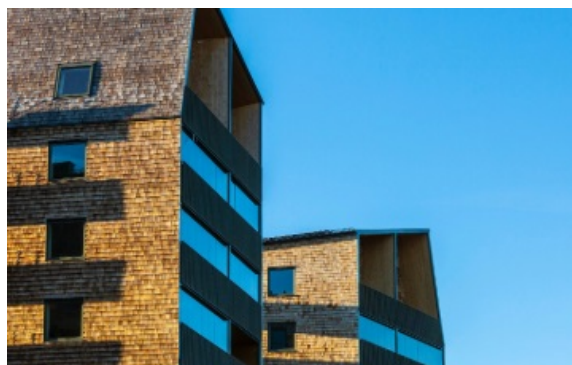


Photo credit: Anders Bergön & FOJAB
Arkitekter, GBJ Bygg

General

Delivery year

2018

Building type

Multi Residential

Area (m²)

22,200

Storeys

7

Units

144

Products

Products and Services

Sylva™ CLT Floors and Roofs,
Sylva™ CLT Walls

Product quality

Non visible quality (NVI) |
Sylva360

Product volume (m³)

6,300



StoraEnso

Team

Partner of Stora Enso

Woodcon AS

Architect

Fojab Arkitekter

Main contractor

GBJ Bygg

Developer

GBJ Bygg

Structural Engineer

Projektbyggaren

Specialist Timber Subcontractor

Woodconstruction Sweden AB