



Partner of Stora Enso

# Entrepatrios Las Carolinas

## Madrid, Spain



The residential building "Entrepatrios Las Carolinas" in Madrid, Spain is characterized by the usage of CLT-massive wood elements. Fruit of the initiative of a social housing cooperative, built with collaborative, ecological and low energy consumption criteria as an alternative to standard real estate. In addition to the positive environmental effects the CLT massive wood elements by Stora Enso create a comfortable working atmosphere for the employees. The completion of the project was in 2020, altogether the residential building comprises 900 m<sup>2</sup>.

### Residential Multi-storey Building Concept by Stora Enso

Multi-storey buildings in massive wood are high-performing, renewable structures that can help to meet the growing demand for new urban buildings and more efficient, sustainable construction.

[Click here to learn more about our residential multi-storey building concept.](#)

### General

**Delivery year**  
Under Construction

**Building type**  
Multi Residential

**Area (m<sup>2</sup>)**  
900

**Storeys**  
4

**Units**  
17



Photo credit: Entrepatrios

### Products

**Products**  
Sylva™ CLT Floors and Roofs, Sylva™ CLT Walls

**Product quality**  
Non visible quality (NVI)

**Product volume (m<sup>3</sup>)**  
465

**Product delivery duration (weeks)**  
8

**Number of truck deliveries**  
8

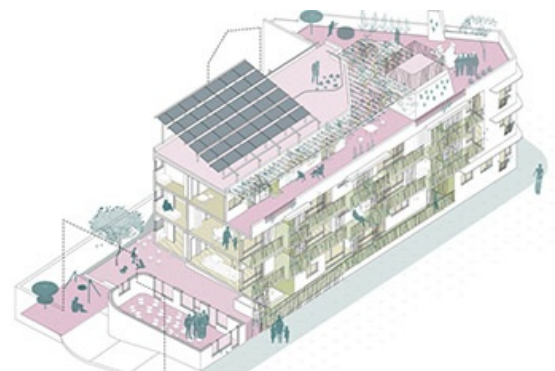


Photo credit: Entrepatrios



---

 **Team**

**Partner of Stora Enso**  
Madergia

**Architect**  
sAtt Arquitectura

**Main contractor**  
GEOH

**Developer**  
Entrepatrios

**Structural Engineer**  
Técnica Eco

**Specialist Timber  
Subcontractor**  
Madergia



Photo credit: Madergia



Photo credit: Madergia



Photo credit: Madergia