



StoraEnso

Partner of Stora
Enso

Nest City Lab Coworking Barcelona, Spain



In a former industrial building, a coworking-type collaborative space is created that among other purposes seeks to encourage reflection on the environmental impact of human actions. CLT and Glulam by Stora Enso are here left exposed for that purpose.

Office Building Concept by Stora Enso

The office buildings of the future are made of wood.

Click here to learn more about our [office building concept](#).

General

Delivery year

2017

Building type

Office

Area (m²)

1,500

Storeys

3

Photo credit: [Nest City Lab](#)

Products

Products and Services

[Sylva™ CLT Floors and Roofs](#),
[Sylva™ CLT Walls](#)

Product quality

Non visible quality (NVI),
Industrial visible quality (INV)

Product volume (m³)

165

Product delivery duration (weeks)

1

Photo credit: [Nest City Lab](#)



StoraEnso

Number of deliveries

3

Team

Partner of Stora Enso

Madergia

Developer

Apocapoc BCN

Architect

DATAAE

**Specialist Timber
Subcontractor**

Madergia



Photo credit: Nest City Lab



Photo credit: Nest City Lab



Photo credit: Nest City Lab

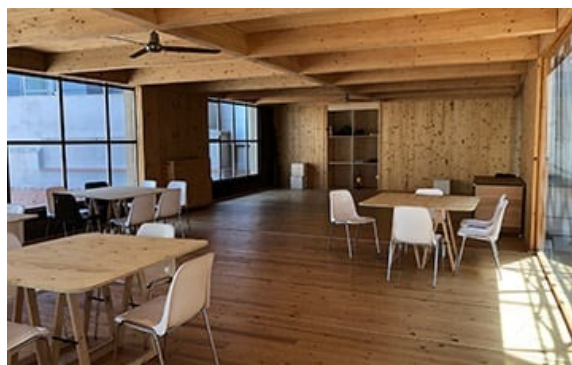


Photo credit: Nest City Lab