



StoraEnso

STRABAG Campus Ybbs

Ybbs an der Donau, Austria

STRABAG achieved an unprecedented level of prefabrication, allowing the apprentice quarters to be erected in just eleven days.

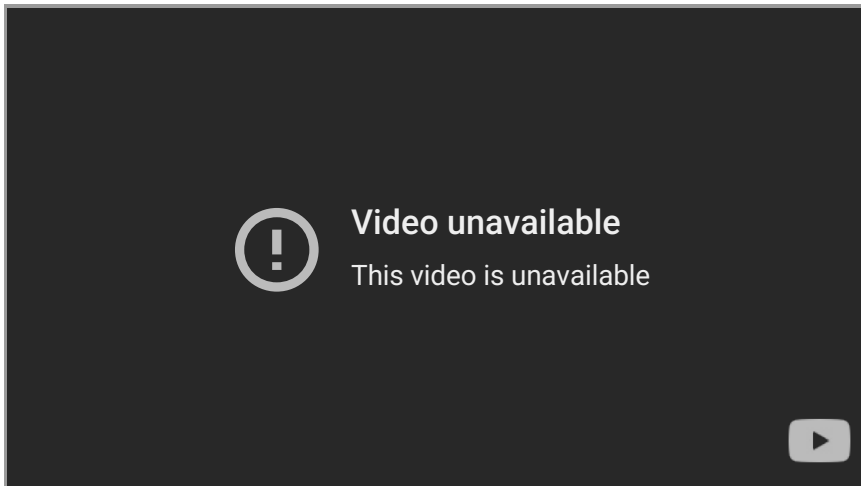
In 2021, STRABAG AG, Austria's largest construction group, opened its new state-of-the-art training facility, STRABAG Campus Ybbs after just one year of construction. This facility, trains around 250 apprentices from across Austria annually. STRABAG invested over €10 million in this project.

Each apprentice spends approximately four weeks on the campus as a part of their vocational school training. During this time, they gain practical experience with tools and construction site procedures in two large factory halls. Apprentices live on-site in quarters equipped with a fitness room, sports fields, and lounges for leisure activities.

Rapid construction

STRABAG Campus is made with a [Sylva™ kit of parts](#) with cross-laminated timber (CLT) elements. Partnering with Stora Enso, STRABAG achieved an unprecedented level of prefabrication, allowing the apprentice quarters to be erected in just eleven days.

The prefabricated elements were pre-equipped with necessary installations at the factory, enabling the project to meet its ambitious one-year construction timeline despite pandemic-related challenges and material shortages. Apprentices also contributed to the construction by installing the external thermal insulation composite system for their quarters .



Are you interested in other projects with high levels of prefabrication?

[Croix Saint Simon | Beechwood Village](#)

[Read more about this project](#)

The renewable materials company



Camp[us] Ybbs | STRABAG Apprenticeship Austria

View more projects in the area built with a Sylva™ kit?

[KIGA II Ybbs Kindergarten](#) | [Volksschule Ybbs an der Donau](#) | [VERBUND Hydropower - Apprentice Campus](#)

General

Delivery year

2021

Building type

Education

Area (m²)

800

Storeys

2



Photo credit: ©STRABAG

Products

Products and Services

[Sylva™ CLT Walls](#)

Product quality

VI and NVI

Product volume (m³)

321

Team

Developer

[STRABAG AG](#)

Architect

[STRABAG's in-house team](#)

Structural Engineer

[STRABAG](#)

Main contractor

[STRABAG AG](#)



StoraEnso

Others

**Timber superstructure
erection duration (weeks)**

2