



StoraEnso

Partner of Stora  
Enso

# Crome Court

## Norfolk, UK

Crome Court is UEA's newest and most energy efficient accommodation block, and the one with the strongest environmental credentials. The award-winning and BREEAM Excellent project, delivered to the University in August 2014, came in £800 000 under budget, in a record-breaking timescale and as one of the first projects in the UK to have achieved a fully-integrated BIM Level 2. Building on previous lessons from other elements of UEA's low carbon campus, it pioneered new techniques and intelligent modelling concepts. The building saves over 74 tonnes of carbon per year. The building includes 232 en-suite student residential rooms, with kitchen and dining rooms per flat, and a communal facility on the ground floor. It is arranged in 5 to 7 storeys in a south-facing U-shaped configuration. Its high-quality spec and finish has ensured very positive response from residents and a new level of environmental data to help shape future accommodation design at UEA.

### Residential Multi-storey Building Concept by Stora Enso

Multi-storey buildings in massive wood are high-performing, renewable structures that can help to meet the growing demand for new urban buildings and more efficient, sustainable construction.

Click here to learn more about our [residential multi-storey building concept](#).



2014 Construction computing awards collaboration project of the year



BREEAM excellent rating Quote Martin Lovatt



Green Gown awards in built environment 2015



Photo credit: Stora Enso



StoraEnso



Winner of 2015 RICS grand final design through Innovation

## General

### Delivery year

2014

### Building type

Multi Residential

### Area (m<sup>2</sup>)

10,000

### Storeys

7

### Units

232

## Products

### Products and Services

Sylva™ CLT Floors and Roofs,  
Sylva™ GLT Beams and  
Columns

### Product volume (m<sup>3</sup>)

1,680

### Product delivery duration (weeks)

13

### Number of deliveries

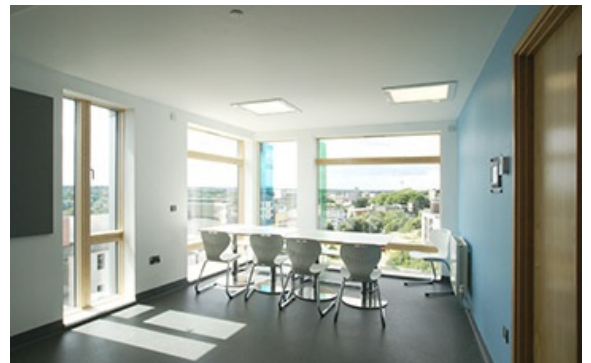
35



Photo credit: Stora Enso



Photo credit: Stora Enso





StoraEnso

---

Photo credit: Stora Enso

## Team

### Partner of Stora Enso

Eurban

### Architect

LSI Architects

### Main contractor

Kier Eastern

### Developer

University of East Anglia

### Structural Engineer

Ramboll

Eurban

### Specialist Timber Subcontractor

Eurban

---

## Others

### Timber superstructure erection duration (weeks)

13