



Green Office Enjoy

Paris, France

The building Green Office Enjoy in Paris, France, was built with CLT massive wood by Stora Enso in 2018. Altogether, the project comprises 16 970 m². The modern construction material has an extremely welcome side effect: the healthy climate within wooden structures creates a particularly pleasant indoor environment and has a demonstrably positive effect on employee's well-being. A total of 1 900 m³ CLT by Stora Enso was used for this construction project.

Office Building Concept by Stora Enso

The office buildings of the future are made of wood.
Click here to learn more about our [office building concept](#).

General

Delivery year	Building type
2018	Office
Area (m²)	Storeys
16,970	8



Photo credit: [Luc Boegly](#)

Products

Products and Services	Product quality
Sylva™ CLT Floors and Roofs	Non visible quality (NVI)
Product volume (m³)	
1,900	

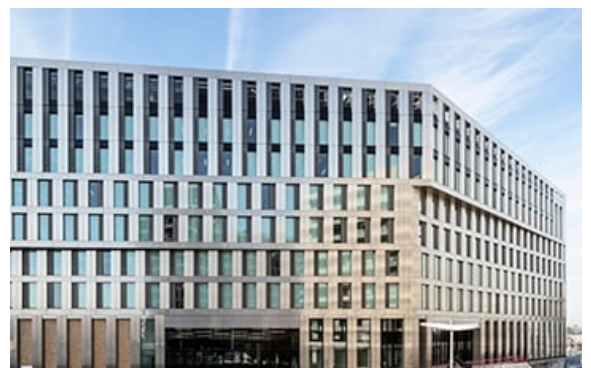


Photo credit: [Luc Boegly](#)



StoraEnso

Team

Developer

Bouygues Immobilier

Structural Engineer

AIA Ingénierie

Specialist Timber Subcontractor

Mathis

Architect

Baumschlager Eberle
Architekten

MEP Designer

Barbanel



Photo credit: Luc Boegly



Photo credit: Luc Boegly



Photo credit: Luc Boegly