



StoraEnso

Cattleya

Treviso (TV), Italy

Partner of Stora
Enso

Modernity and sustainability meet at Villa Cattleya—a residential green building project that combines the healthy and ecological properties of CLT wood.

Villa Cattleya (which bears the name of an orchid) is a single-family house that is spread over an area of about 230 square meters plus 120 square meters of porches and was designed by studio Tecnico Manolo Dal Col. The laying of the entire wooden supporting structure was carried out in about 10 days including the realization of the roofing package and waterproofing membranes

The executive and structural design phase instead required more time to allow a perfect execution of all the laying phases.

General

Delivery year

2020

Building type

1-2 Family Dwellings

Area (m²)

120

Storeys

1

Units



Photo credit: Decimo Primo s.r.l.



StoraEnso

1

Products

Products and Services

Sylva™ CLT Floors and Roofs,
Sylva™ CLT Walls

Product quality

Non visible quality (NVI)

Product volume (m³)

37

Product delivery duration (weeks)

1

Number of deliveries

1



Photo credit: Decimo Primo s.r.l.



Photo credit: Decimo Primo s.r.l.

Team

Partner of Stora Enso

MAK Building

Developer

Decimo Primo srl

Architect

Studio Tecnico Manolo Dal Col

Main contractor

Decimo Primo srl

Specialist Timber Subcontractor

Decimo Primo srl

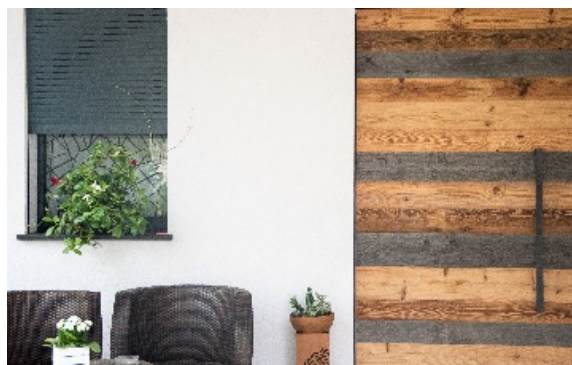


Photo credit: Decimo Primo s.r.l.



Photo credit: Decimo Primo s.r.l.

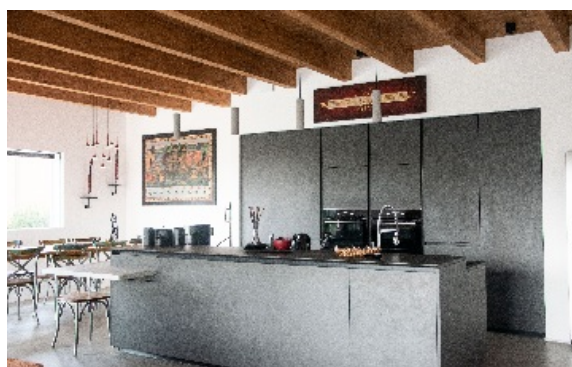


Photo credit: Decimo Primo s.r.l.



Photo credit: Decimo Primo s.r.l.