

Single Family House Mautern

Mautern, Austria

This detached house in Mautern, was built with CLT massive wood by Stora Enso in 2010. The modern construction material has an extremely welcome side effect: the healthy climate within wooden structures creates a particularly pleasant indoor environment and has a demonstrably positive effect on residents' wellbeing.

General

Delivery year
2010

Building type
1-2 Family Dwellings

Area (m²)
130

Storeys
2

Units
1



Photo credit: Stora Enso

Products

Products
CLT

Product quality
Visible quality (VI)

Product volume (m³)
21



Photo credit: Stora Enso



Team

Main contractor
Ing. Schania Johann



Photo credit: Stora Enso



Photo credit: Stora Enso



Photo credit: Stora Enso

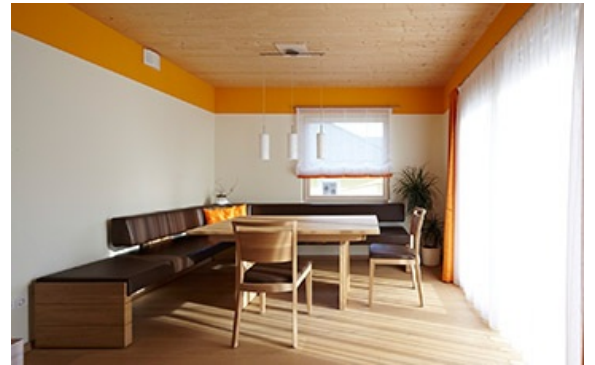


Photo credit: Stora Enso

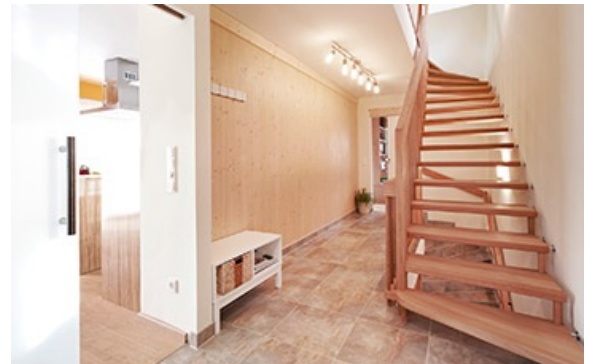


Photo credit: Stora Enso