

# Kvarteret Pumpan

## Alingsås, Sweden

The wooden flat Kvarteret Pumpan in Alingsås (Sweden) was built entirely with CLT by Stora Enso massive wood elements. The prefabricated CLT massive wood elements fulfil all the requirements of statics and building physics, as well as of heat, moisture, fire and sound protection. A total of 511 m<sup>3</sup> CLT in visible (VI) and non visible quality (NVI) by Stora Enso was used for the project. The modern construction material has an extremely welcome side effect: the healthy climate within wooden structures creates a particularly pleasant indoor environment and has a demonstrably positive effect on the well-being. This project was completed in 2019, altogether the wooden flat comprises 770 m<sup>2</sup>.

### Residential Multi-storey Building Concept by Stora Enso

Multi-storey buildings in massive wood are high-performing, renewable structures that can help to meet the growing demand for new urban buildings and more efficient, sustainable construction.

[Click here to learn more about our residential multi-storey building concept.](#)

### General

#### Delivery year

2019

#### Building type

Flats

#### Area (m<sup>2</sup>)

770

#### Storeys

2

#### Units

26



Photo credit: Nock Massiva trähus

### Products

#### Products

CLT

#### Product quality

Visible quality (VI), Non visible quality (NVI)

#### Product volume (m<sup>3</sup>)

511

#### Number of truck deliveries

4



Photo credit: Nock Massiva trähus



---

 **Team**

**Partner of Stora Enso**  
Nock Massiva Trähus

**Architect**  
Okidoki Arkitekter

**Main contractor**  
Nock Massiva Trähus

**Developer**  
Alingsåshem AB

**Structural Engineer**  
Rundlöf & Björling

**Specialist Timber Contractor**  
Nock Massiva Trähus



Photo credit: Nock Massiva trähus

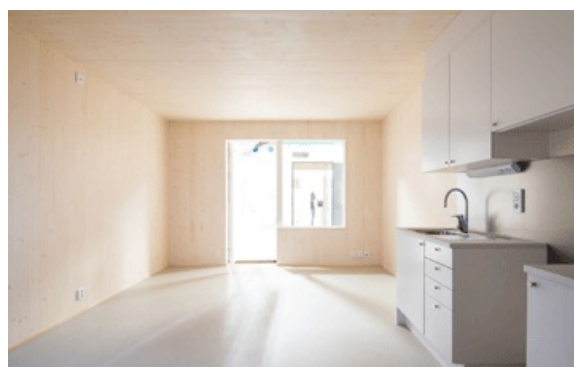


Photo credit: Nock Massiva trähus



Photo credit: Nock Massiva trähus



Photo credit: Nock Massiva trähus