



Lapinmäki

Helsinki, Finland

The Lapinmäki kindergarten in Helsinki is the first CLT kindergarten project for Stora Enso in Finland. The two-storey building will be built with CLT massive wood by Stora Enso. Altogether, the project comprises 400 m³. The modern construction material has an extremely welcome side effect: the healthy climate within wooden structures creates a particularly pleasant indoor environment and has a demonstrably positive effect on residents' wellbeing.

School Concept by Stora Enso

Let's build a learning environment for the next generation.
Click here to learn more about our [school concept](#).

General

Delivery year

Under Construction

Building type

Education

Storeys

2



Photo credit: Mats Vuorenjuuri

Products

Products and Services

[Sylva™ CLT Floors and Roofs](#)

Product quality

Visible quality (VI), Non visible quality (NVI)

Product volume (m³)

400



Photo credit: Mats Vuorenjuuri



StoraEnso

Team

Developer

City of Helsinki

Structural Engineer

Ideastructura Oy

Specialist Timber Subcontractor

Puurakentajat Oy

Architect

AFKS Oy

Main contractor

Rakennuspartio Oy



Photo credit: Mats Vuorenjuuri

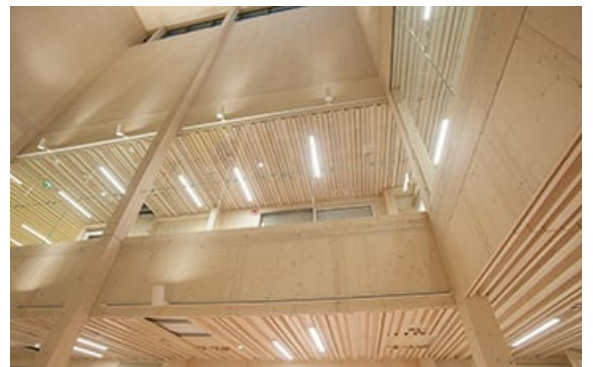


Photo credit: Mats Vuorenjuuri



Photo credit: Mats Vuorenjuuri



Photo credit: Mats Vuorenjuuri

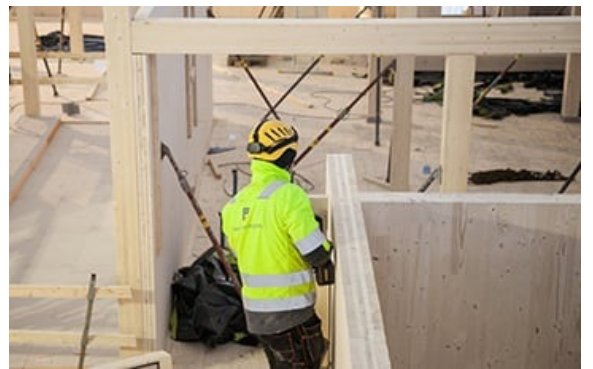


Photo credit: Mats Vuorenjuuri