



StoraEnso

# Single Family House Woning Meeuwen

## Meeuwen, Belgium

Partner of Stora  
Enso

Experience the warmth and sustainability of modern living with the Single Family House Woning Meeuwen, where innovative CLT construction meets low carbon design.

The Single Family House Woning Meeuwen stands out for its innovative use of prefabricated elements made from cross laminated timber, which brings numerous benefits to single-family dwellings.

CLT is a sustainable and versatile building material that offers exceptional strength and stability, making it ideal for constructing durable homes. Its prefabrication process allows for faster construction times, reducing on-site labor and minimizing disruptions to the surrounding environment.

Additionally, CLT's natural wood aesthetic provides a warm and inviting atmosphere, enhancing the overall living experience.

The material's excellent thermal insulation properties contribute to energy efficiency, ensuring a comfortable indoor climate while lowering energy costs.

By incorporating CLT, Woning Meeuwen showcases both modern architectural design but also promotes sustainable construction practices.

---

### General

**Delivery year**

2018

**Building type**

1-2 Family Dwellings

**Area (m<sup>2</sup>)**

150

**Storeys**

2

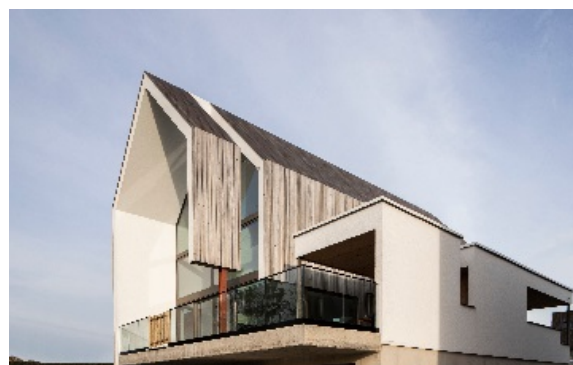


Photo credit: CLT-S



StoraEnso

## Products

### Products and Services

Sylva™ CLT Floors and Roofs,  
Sylva™ CLT Walls

### Product volume (m<sup>3</sup>)

77

### Number of deliveries

2

### Product quality

Non visible quality (NVI)

### Product delivery duration (weeks)

1



Photo credit: CLT-S

## Team

### Partner of Stora Enso

CLT-S NV

### Main contractor

Private

### Architect

Architect Lize Vandael

### Specialist Timber Subcontractor

CLT-S