



storaenso

Zuiderzicht Antwerp

Antwerp, Belgium

CLT-S provided the balconies for this iconic sustainable residential tower in Antwerp using CLT by Stora Enso. Zuiderzicht is a residential tower with integrated hotel and shared functions. It is part of the development of 'Antwerpen Nieuw Zuid', which is a new residential area next to the Scheldt in the southern parts of Antwerp. The concept interprets the qualities of the typical Belgian house. The apartments are compact, efficiently organized and surrounded by a flexible structure, which is designed as a double height grid. Within this structure a variety of outdoor spaces is created. The upper floors have a diversity of conservatories, single and double height open balconies. The ground floor duplexes have green gardens. The constructive structure of the tower with a central core offers maximum flexibility for the distribution of the various typologies, the number of units per floor and allows for future adjustments at a later stage. 420 m³ CLT by Stora Enso in industrial visible quality (INV) were used in the project.

Residential Multi-storey Building Concept by Stora Enso

Multi-storey buildings in massive wood are high-performing, renewable structures that can help to meet the growing demand for new urban buildings and more efficient, sustainable construction.

[Click here to learn more about our residential multi-storey building concept.](#)

General

Delivery year
2018

Building type
Flats

Area (m²)
4200

Storeys
26

Units
141

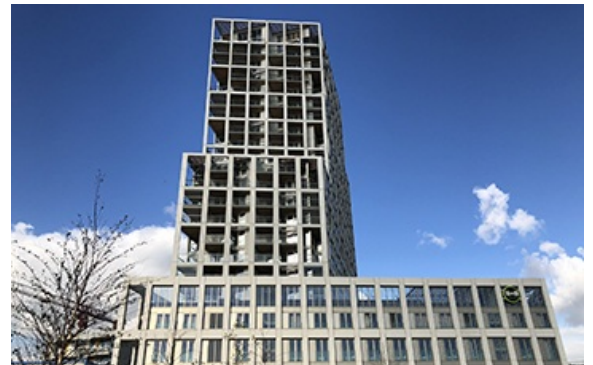


Photo credit: CLT-S

Products

Products
CLT

Product quality
Industrial visible quality (INV)

Product volume (m³)
420

Product delivery duration (weeks)
Industrial visible quality (INV)

Number of truck deliveries
9

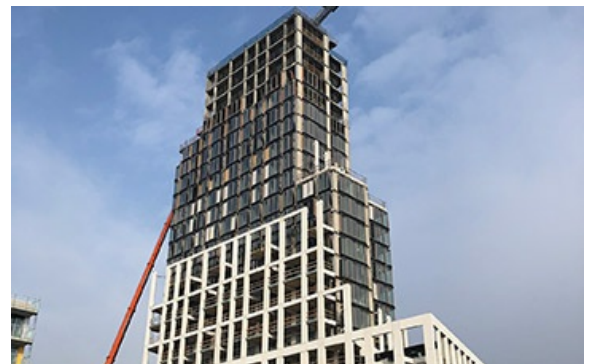


Photo credit: CLT-S



 **Team**

Developer
KCAP

Architect
Studio Associato Secchi-Viganò

Specialist Timber Contractor
CLT-S



Photo credit: CLT-S



Photo credit: CLT-S