



StoraEnso

Partner of Stora  
Enso

# Newington Butts

## London, UK

It is situated on the site of the old London Hotel next to St Mary's Churchyard. The eight-storey building accommodates 115 social housing units for Peabody Housing Association. Together with the neighbouring 47-storey octagonal concrete tower, the development will provide 450 apartments, as well as a café and a theatre for the Southwark Playhouse. The logistics on this tight site meant that solid timber was the most cost-effective solution, saving the client a considerable amount of time on the overall programme as well as reducing the risks onsite.

### Residential Multi-storey Building Concept by Stora Enso

Multi-storey buildings in massive wood are high-performing, renewable structures that can help to meet the growing demand for new urban buildings and more efficient, sustainable construction.

Click here to learn more about our [residential multi-storey building concept](#).



2018 Offsite awards 2 x highly commended

### General

Delivery year

Building type



Photo credit: [Eurban](#)



StoraEnso

2016 Multi Residential

**Area (m<sup>2</sup>)**

9,000

**Storeys**

8

**Units**

115



Photo credit: [Eurban](#)

## Products

**Products and Services**

Sylva™ CLT Floors and Roofs,  
Sylva™ GLT Beams and  
Columns

**Product volume (m<sup>3</sup>)**

2,099

**Product delivery duration  
(weeks)**

18

**Number of deliveries**

57



Photo credit: [Eurban](#)

## Team

**Partner of Stora Enso**

[Eurban](#)

**Developer**

[Realstar Group](#)

**Architect**

[Rogers Stirk Harbour &  
Partners](#)

**Structural Engineer**

[AKT-II  
Eurban](#)

**Main contractor**

[MACE](#)

**Specialist Timber  
Subcontractor**

[Eurban](#)

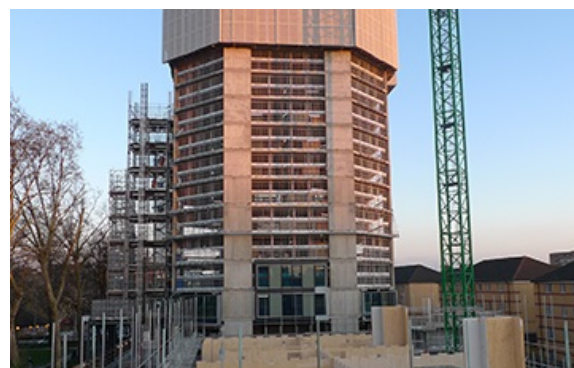


Photo credit: [Eurban](#)



StoraEnso

---

## Others

**Timber superstructure  
erection duration (weeks)**

18