



storaenso

Partner of Stora Enso



WOODCON

# Sergeanten

## Visby Gotland, Sweden

The city of Visby on Sweden's Gotland Island is awaiting the completion of its first CLT multi-storey residential apartment block. The building will consist of 64 condominiums, divided into two four-storey houses and two houses with two floors. Construction began in autumn 2017, and a total of 1 650 m<sup>3</sup> CLT by Stora Enso in non-visible quality will be used. The "Sergeanten" building will be ready for occupancy at the start of 2019.

### Residential Multi-storey Building Concept by Stora Enso

Multi-storey buildings in massive wood are high-performing, renewable structures that can help to meet the growing demand for new urban buildings and more efficient, sustainable construction.

[Click here to learn more about our residential multi-storey building concept.](#)



### General

#### Delivery year

2019

#### Building type

Flats

#### Area (m<sup>2</sup>)

4000

#### Storeys

2

#### Units

64



Photo credit: Arriba Bygg



### Products

#### Products

CLT

#### Product volume (m<sup>3</sup>)

1 650

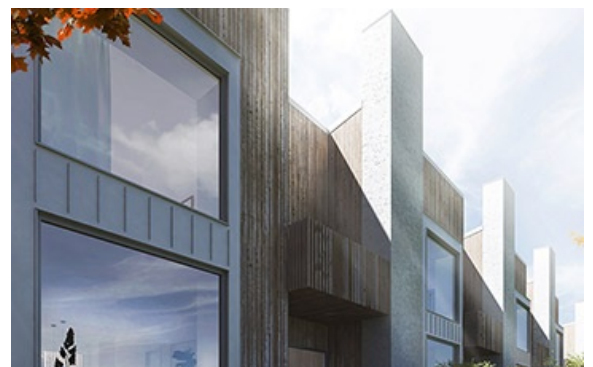


Photo credit: Arriba Bygg



---

 **Team**

**Partner of Stora Enso**  
Woodcon AS

**Architect**  
Murman Arkitekter

**Main contractor**  
Arriba Bygg

**Developer**  
Arriba Bygg

**Structural Engineer**  
TK Botnia

**Specialist Timber  
Contractor**  
Woodcon