



StoraEnso

# Nonnewiesen

## Esch Zsur-Alzette, Luxembourg

The project consists of two types of residential buildings: one multifamily house and a series of eleven townhouses. All components are made of CLT by Stora Enso (Cross Laminated Timber), the exterior walls including insulation were prefabricated in the Prefalux factory. The interior walls (partly in visible quality) as well as ceilings / roofs were delivered directly to the construction site. Completion in 2015.

### Residential Multi-storey Building Concept by Stora Enso

Multi-storey buildings in massive wood are high-performing, renewable structures that can help to meet the growing demand for new urban buildings and more efficient, sustainable construction.

Click here to learn more about our [residential multi-storey building concept](#).

---

### General

#### Delivery year

2015

#### Building type

Multi Residential

#### Area (m<sup>2</sup>)

400

#### Storeys

4



Photo credit: Stora Enso



StoraEnso

## Products

### Products and Services

Sylva™ CLT Floors and Roofs,  
Sylva™ CLT Walls

### Product volume (m<sup>3</sup>)

1,300

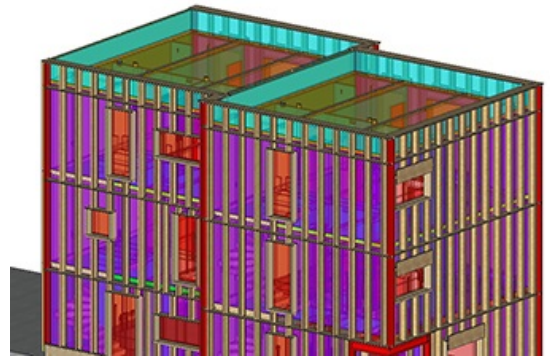


Photo credit: Stora Enso

## Team

### Architect

michel petit architecte

### Specialist Timber Subcontractor

Prefalux



Photo credit: Stora Enso



Photo credit: Stora Enso



Photo credit: Stora Enso



Photo credit: Stora Enso