



StoraEnso

Bauhaus Archive / Museum of Design

Berlin, Germany

Renovating a building designed by Bauhaus founder Walter Gropius (1883–1969) himself, it seems perfectly fitting to use materials and methods underpinning the school's famous aphorism 'less is more.'

Applying some of the most efficient uses of raw sustainable materials and precision pre-construction with easy-to-build Sylva™ CLT Walls and Floors by Stora Enso, the new tower is taking shape.

If you look closely at the pictures, you will see leader timber contractors René Quappé and Stora Enso have substituted steel with wood in the connections.

Stora Enso used a finger cutter on the PBA CNC machine in our mill to create the steel-free, X-fix connectors that connect the panels.

The 92 million EUR project will reopen in 2025 with the world's largest collection of Bauhaus history (1919–1933), the most important school of architecture, art and design of the 20th century.

General

Delivery year

Under Construction

Building type

Others

Area (m²)

6,700



Photo credit: Stora Enso

Products

Products and Services

Sylva™ CLT Floors and Roofs,
Sylva™ CLT Walls

Product quality

NVI and VI with special milling

Product volume (m³)

174

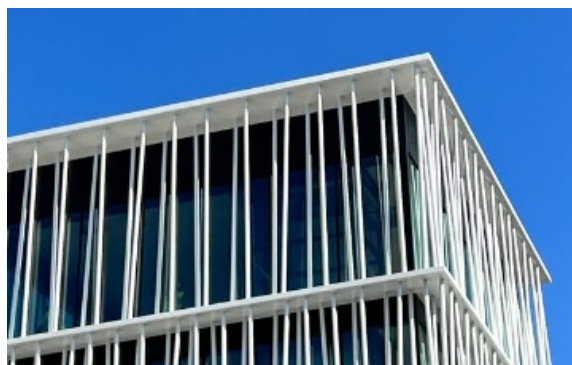


Photo credit: Stora Enso



StoraEnso

Team

Developer

State of Berlin

Structural Engineer

Bollinger+Grohmann

Specialist Timber Subcontractor

René Quappé

Architect

Staab Architekten GmbH

Main contractor

René Quappé



Photo credit: Stora Enso

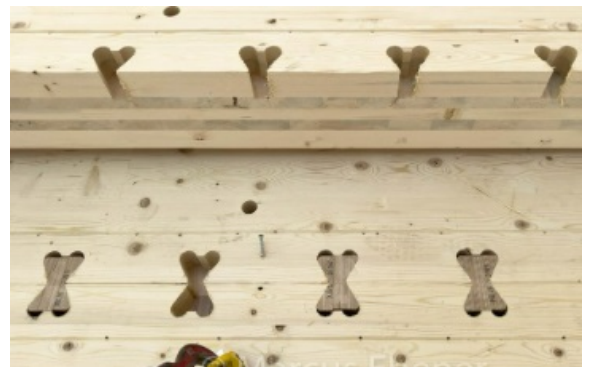


Photo credit: Stora Enso

Others

Total construction development cost (€)

92,000,000



Photo credit: Staab Architekten/ © H. - J. Wuthenow