



StoraEnso

PaarTurm | Two Wooden Towers

Pörtschach am Wörthersee, Austria

This award-winning semi-detached home uses extensive exposed visual quality cross-laminated timber (CLT) and an innovative design to create a unique sense of space and community.

Exposed wood

The extensive use of exposed wood surfaces throughout the entire building, and the thoughtful orientation of the two structures were recognized by the prestigious Kärntner Holzbaupreis in 2016.

Creating space and community

Two Wooden Towers is a semi-detached home that is quite unique in form and structure. Instead of a uniform and large subdivided structure, the building is divided into two separate volumes, creating a space in between in a unique way.

This semi-detached house has two similar towers standing close to each other, creating spaces in front and between them. The building site is defined by the building restriction line and the maximum height for the zone area.

The development was in part an experiment that was aiming to improve the living quality by introducing bonded communities that are situated close to each other but with a sense of ones own space. The architects were also keen to ensure that natural and sustainable materials were used that would blend in with the surrounding landscape.

Layout

The houses are organized across four floors with a cellar that functions as a wellness area and technical rooms. On the ground floor, there are bedrooms and the first floor is used for cooking and a living area. The attic is reserved for the view.

Vertical circulation is organised by a very compact core and a hydraulic ramp for barrier-free usage.

Constructing with wood

Both structures stand on a shared concrete base using [cross-laminated timber \(CLT\) plates](#). The façade is made from pine wood, the floors are made from larch.

All interior wooden surfaces were left untreated. This rawness, both inside and out, allow the two towers to blend in with the natural surroundings.

The sun-protecting lamellae are made of pine wood.

Maximizing space and natural aesthetics

Despite tight layout specifications, space has been optimally utilized in this project. Great care has been taken to expose as many visible CLT wood surfaces as possible, creating a natural sense of space.

The almost exclusive use of wood and wooden materials, the exposure of wood surfaces throughout the entire building, and the well-chosen orientation of the two structures were honoured with an award by the jury of the 2016 Kärntner Holzbaupreis (Timber Construction Awards).

Publications

The renewable materials company



StoraEnso

Best of Austria, Architektur 2016_17, ed. Architekturzentrum Wien, Park Books, Zurich 2018.

Owner builder Network [Two Wooden Towers - The Owner-Builder Network](#)

Wow Wow Home: [Two Wooden Towers by Hohengasser Wirnsberger Architekten | Wowow Home Magazine](#)

ArchDaily: [Two Wooden Towers / Sonja Hohengasser & Juergen Wirnsberger | ArchDaily](#)



Kärntner Landesbaupreis 2016 Shortlisted



Holzbaupreis Karnten 2015 Winner



Photo credit: ©Christian Brandstätter

General

Delivery year

2016

Building type

1-2 Family Dwellings

Area (m²)

172

Storeys

3

Units

1



Photo credit: ©Christian Brandstätter

Products

Products and Services

[Sylva™ CLT Floors and Roofs](#),
[Sylva™ CLT Walls](#)

Product quality

Visible quality (VI)

Product volume (m³)

53



Photo credit: ©Christian Brandstätter



StoraEnso

Team

Developer

Christian Rohrmoser, Karoline
Rohrmoser

Main contractor

Rohrmoser Zimmerei GmbH

Architect

Hohengasser Wirnsberger
Architekten ztgmbh

Specialist Timber Subcontractor

Rohrmoser Zimmerei G.m.b.H



Photo credit: ©Christian Brandstätter

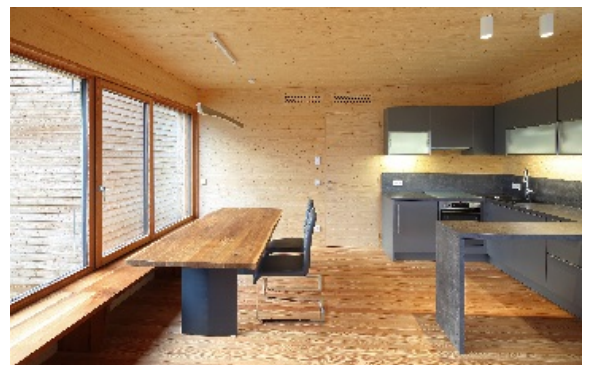


Photo credit: ©Christian Brandstätter