



StoraEnso

Partner of Stora
Enso

Humboldt | Cederhusen

Stockholm, Sweden



Altogether, the development by Folkhem provides over two hundred sustainable homes in a new walkable wooden oasis of a neighbourhood in Hagastaden's western area. Folkhem's philosophy is that Cederhusen's timeless feel, with the wood in focus, should create a DNA for many decades to come, both nationally and internationally for how we build our future cities.

These apartments are hugely popular and sold rapidly. In one tower alone with 72 apartments, there were over 3,200 interested parties for viewings before completion! Nearly all of the buyers indicated a strong desire for climate-smart living (according to the developer Folkhem's survey), which reflects the global trend of consumer preference for sustainable living.

The Humboldt section of Cederhusen (Ceder House in English) was completed exactly on time by ByggPartner. Thanks in large part to a prefabricated [Sylva™ building kit by Stora Enso](#). 32 floors were installed in just 32 weeks across the four towers.

The mass-customised kit also enabled optimised transport (80% fewer trucks than if it had been built in concrete), efficient assembly, and a quiet construction site in a residential neighbourhood. Using [preinstalled lifting devices and Sylva360™](#) added to the rapid construction time.

The four towers are built on top of the tunnels of the busy inner-city highways (E4 and E20) and the Värtabanan rail line, posing complex considerations for the architects at General Architecture. But by using wood, which is typically five times lighter than concrete, it was made possible.



Building of the Year 2025 nomination



Stockholm's Building of the Year!



Träpriset 2024 Nomination



Photo credit: ByggPartner



General

Delivery year

2023

Area (m²)

13,225

Units

245

Building type

Multi Residential

Storeys

32



Photo credit: ByggPartner

Products

Products and Services

Sylva™ CLT Floors and Roofs,
Sylva™ CLT Walls, Preinserted
lifting devices , Sylva360™

Product quality

NVI and VI in the corridors |
PEFC certified wood

Product volume (m³)

4,146



Photo credit: ByggPartner

Team

Partner of Stora Enso

ByggPartner

Developer

Folkhem

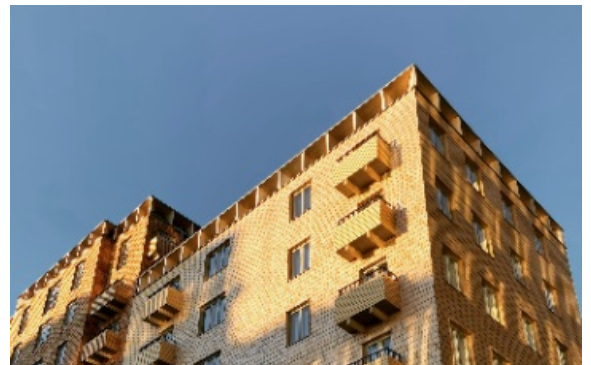


Photo credit: Folkhem



StoraEnso

Architect

General architecture

MEP Designer

Limträteknik Magnus Emilsson

Structural Engineer

Bjerking

Main contractor

ByggPartner



Photo credit: Folkhem

Others

**Timber superstructure
erection duration (weeks)**

32