



Dream Work

Villeneuve d'Ascq, France

This 100% wooden office is located just outside Lille and the first tenants moved during the first quarter of 2021

This 3,000 m² wooden structure office building in Villeneuve d'Ascq is made out with glue laminated timber post and beams with a cross-laminated timber (CLT) floor. Spanning three stories, Dream Work delivers a wide open space area with modularity and flexibility to adapt the working space.

There are 630m³ of CLT on this project by Stora Enso left visible on the ceiling to provide a spectacular working environment and atmosphere.

General

Delivery year

2020

Building type

Office

Area (m²)

3,300

Storeys

3



Photo credit: [Création Bois Construction](#)

Products

Products and Services

[Sylva™ CLT Floors and Roofs](#),
[Sylva™ GLT Beams and Columns](#)

Product quality

INV

Product volume (m³)

630



Photo credit: [Création Bois Construction](#)



StoraEnso

Team

Developer

Edouard Denis

Structural Engineer

Ceder

Architect

O Architecture

Specialist Timber Subcontractor

Création Bois Construction



Photo credit: Création Bois Construction

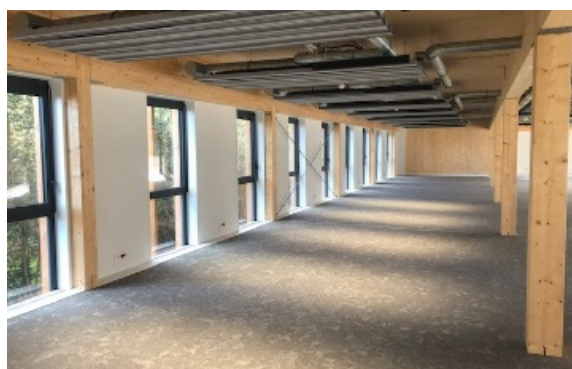


Photo credit: Création Bois Construction



Photo credit: Création Bois Construction