



Partner of Stora Enso

# Hondarribi house Rennovation

## Hondarribi, Spain



The refurbishment project in the old town of Hondarribia, next to the Puerta de Santa María, Spain was renovated with CLT massive wood by Stora Enso in 2017. Building material CLT (Cross Laminated Timber) are particularly light-weight, yet strong – ideal for use in the construction. 20 m<sup>3</sup> CLT by Stora Enso in non visible quality (NVI) were used in the project.

### Residential Multi-storey Building Concept by Stora Enso

Multi-storey buildings in massive wood are high-performing, renewable structures that can help to meet the growing demand for new urban buildings and more efficient, sustainable construction.

[Click here to learn more about our residential multi-storey building concept.](#)

### General

**Delivery year**  
2017

**Building type**  
Flats

**Area (m<sup>2</sup>)**  
500



Photo credit: Madergia

### Products

**Products**  
CLT

**Product quality**  
Non visible quality (NVI)

**Product volume (m<sup>3</sup>)**  
100



Photo credit: Madergia



---

 **Team**

**Partner of Stora Enso**  
Madergia

**Main contractor**  
NS Arquitectura y Urbanismo

**Architect**  
NS Arquitectura y Urbanismo

**Specialist Timber Contractor**  
Madergia



Photo credit: Madergia

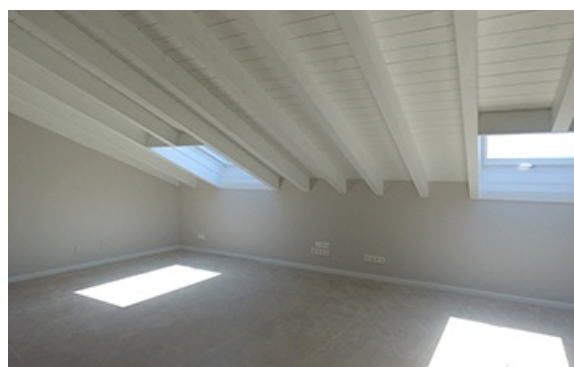


Photo credit: Madergia



Photo credit: Madergia