



StoraEnso

Algutstorp

Vårgårda, Sweden

The wooden apartments in Algutstorp in Vårgårda, Sweden are ready-to-go homes built entirely with sustainable wood by Stora Enso.

The prefabricated cross-laminated timber (CLT) massive wood elements fulfil all the requirements of static, modular homes and building physics, for heat, moisture, fire and sound protection.

A total of 536 m³ CLT in visible (VI) and non visible quality (NVI) was used for the project.

The modern construction material has a welcoming effect with a healthy indoor climate.

Residential Multi-storey Building Concept by Stora Enso

Multi-storey buildings in massive wood are high-performing, renewable structures that can help to meet the growing demand for new urban buildings and more efficient, sustainable construction.

Click here to learn more about our [residential multi-storey building concept](#).

General

Delivery year

2019

Building type

Multi Residential

Area (m²)

1,016

Storeys

2

Units



Photo credit: Nock Massiva trähus



Products

Products and Services

Sylva™ CLT Floors and Roofs,
Sylva™ CLT Walls

Product quality

Visible quality (VI), Non visible
quality (NVI)

Product volume (m³)

536

Team

Developer

Förvaltnings AB Skräddaren

Architect

Nock Massiva Trähus

Main contractor

Nock Massiva Trähus

Specialist Timber Subcontractor

Nock Massiva Trähus



Photo credit: Nock Massiva trähus



Photo credit: Nock Massiva trähus



Photo credit: Nock Massiva trähus



StoraEnso

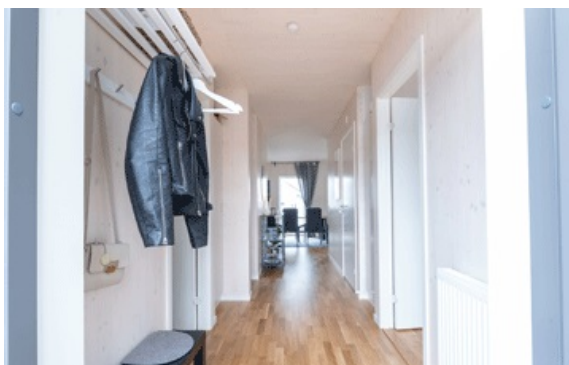


Photo credit: Nock Massiva trähus