



# LignoAlp office building

## Brixen, Italy

Even from the outside, the company LignoAlp's office building has a fascinating and impressive appearance, evocative of an oversized wooden cube. The staircase, elevator shaft and entrance area were made with CLT by Stora Enso, demonstrating the flexible functionality of this building material. The fascinating interior design invites visitors on a journey of discovery into the world of timber as a natural building material.

### Office Building Concept by Stora Enso

The office buildings of the future are made of wood.

[Click here to learn more about our office building concept.](#)



### General

**Delivery year**  
2011

**Building type**  
Office



Photo credit: Stora Enso



### Products

**Products**  
CLT

**Product volume (m<sup>3</sup>)**  
90



Photo credit: Stora Enso



---

 **Team**

**Developer**  
Damiani Holz & Co S.p.A.

**Architect**  
Sandy Attia and Matteo Scagnol

**Main contractor**  
Damiani Holz & Co S.p.A.



Photo credit: Stora Enso

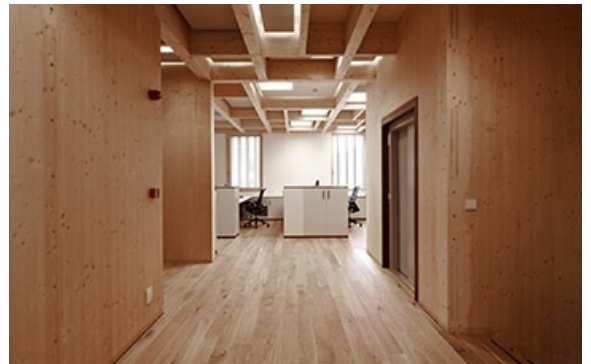


Photo credit: Stora Enso



Photo credit: Stora Enso



Photo credit: Stora Enso